

West Coast Life Ins Co

Group Affiliation: Protective Life Corp
Address: 2801 Highway 280 South
 Birmingham AL 35223
Phone: 205-268-1000

Domicile: NE
NAIC Number: 70335
Year Established: 1915
Company Type: Stock

Ratings

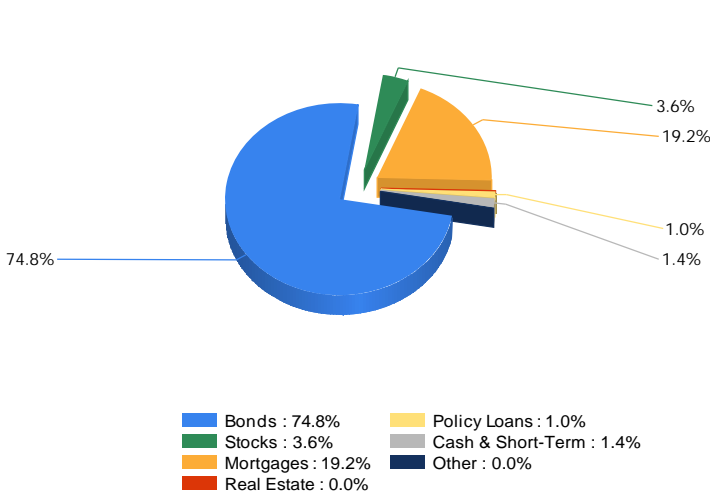
A.M. Best Company(Best's Rating, 15 ratings)	A+ (2)
Standard & Poor's(Fin. Strength, 20 ratings)	AA- (4)
Moody's(Fin. Strength, 21 ratings)	A2 (6)
Fitch Ratings(Fin. Strength, 21 ratings)	A (6)
Weiss(Safety Rating, 16 ratings)	C+ (7)
Comdex(Percentile in Rated Companies)	87

Assets & Liabilities

Total Admitted Assets	3,827,235
Total Liabilities	3,183,137
Separate Accounts	49,930
Total Surplus & AVR	670,871
As % of General Account Assets	17.8%

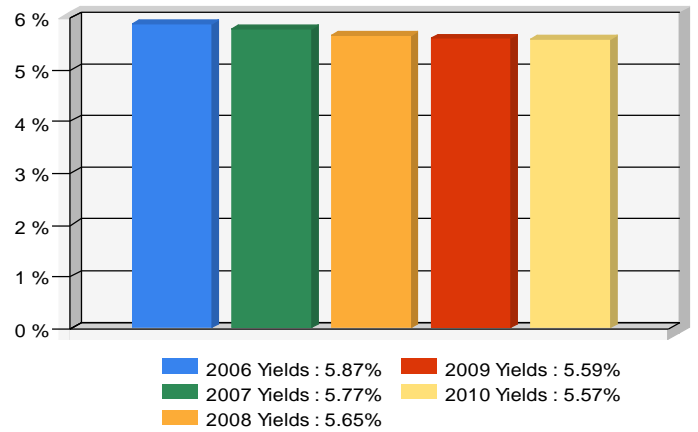
Invested Asset Distribution

Total Invested Assets 3,651,449



5 Year Investment Yields

5 Year Average 5.69%



Net yield on mean invested assets

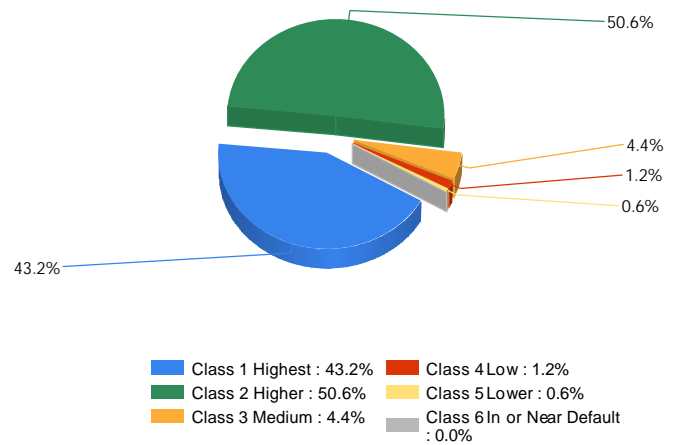
Bond Quality

Non-Performing Assets

Bonds In or Near Default	0.0%
Problem Mortgages	0.0%
Real Estate Acquired by Foreclosure	0.1%
Total Non-Performing Assets/Surplus & AVR	0.1%
As a Percent of Invested Assets	0.0%

Income & Earnings

Total Income	240,190
Net Premiums Written	134,846
Earnings Before Dividends and Taxes	-267,732
Net Operating Earnings	-300,455



Distribution of bond classes

Data for Year-End 2010 from the life insurance companies' statutory annual statements. All dollar amounts are in thousands. All ratings shown are current as of November 02, 2011.